



Sage PFW ERP

Premier Ledger • Standard Ledger

Take advantage of a financial ledger that is flexible yet comprehensive, sophisticated yet easy to use. The Sage PFW ERP General Ledger module delivers the information you need to understand your financial status fully, satisfying your unique business requirements today and easily adapting to changes in the future. Effective management of your organization's financials enables you to make smarter, more proactive decisions that can maximize profits and virtually eliminate negative impacts on profit and loss statements.

Track and analyze your financial data to optimize your productivity using tools and accounting structures that are tailored to your business needs. Almost endless flexibility includes user-defined chart of accounts structure, account types, journals, period dates with up to 366 periods per year, controls for processing and balancing options, batch control totals, earnings controls, and much more. You can even control the amount of detail the system maintains. What's more, month-end and year-end procedures are a snap. Since Sage PFW automatically updates all balances and history every time you post, all you need to do is make the adjusting entries. Sage PFW empowers you with a threaded transaction scheme—a clear audit trail with full transaction detail that is automatically maintained for an unlimited number of years. This means you can always follow the historical detail in your reports. Plus, you'll be able to perform fast data queries and then drill down to the source for more details.

Finally, when combined with Microsoft® FRx® Desktop, it creates a powerful, reliable, easy-to-use, and secure solution that can provide an insightful future of financial success.

CUSTOMIZATION

Sage PFW is easily customized—not only within General Ledger, but also throughout the solution—to fit the widely varying needs of today's businesses.

MULTICURRENCY CAPABILITIES

Extensive multicurrency capabilities, including instant conversion of foreign currencies to home currency and vice versa, give you a competitive edge for success in the global marketplace.

ACCESS BUSINESS-CRITICAL INFORMATION

Empower your staff with vital information when they need it! Universal Notes and Attachments put critical information for maintaining detailed audit trails and increasing productivity, at your fingertips.

STREAMLINED INTEGRATION

General Ledger provides a comprehensive, fully integrated system that streamlines your workflow, giving you more time to address strategic business issues.

IMPROVE YOUR DECISION MAKING

Better, faster, and smarter decisions can provide you with a significant competitive advantage. Decision-makers benefit from accurate and timely financial data that provides the business insight required to capitalize on opportunities.

INSIGHTFUL REPORTS AND DRILL-DOWN CAPABILITIES

Transforms your data into insightful reports and inquiries that can help you more effectively manage your business.

STANDARD LEDGER

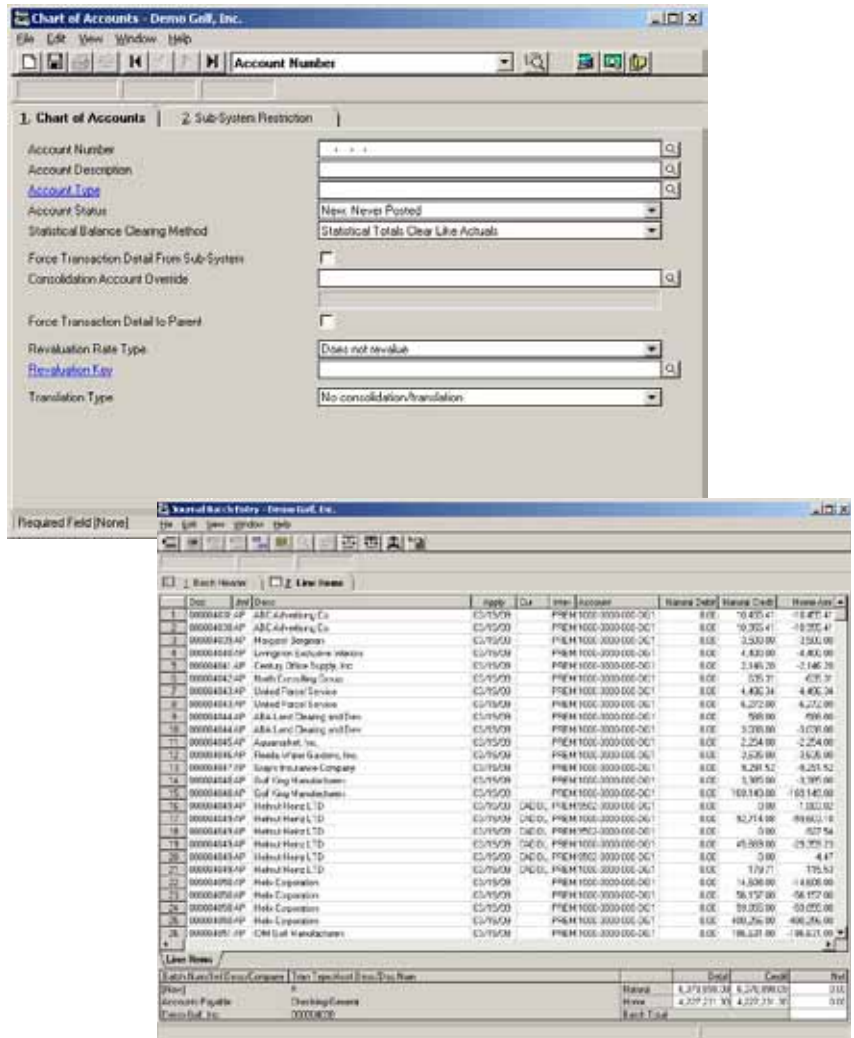
- Uphold GAAP Compliance.
- Utilize account numbers of up to 12 characters in length with up to 12 segments.
- Benefit from a mask length of 24.
- Use multiple transaction types—one actual, three budget, and one statistical.
- Categorize account segments.
- Classify account types (asset, expenses).
- Identify up to 366 accounting periods.
- Make use of batch control options.
- Define recurring and reversing journal entries.
- Maintain multiple earnings accounts.

PREMIER LEDGER

All of the capabilities of the Standard Ledger, plus extensive advanced features:

- Utilize account numbers of up to 32 characters with up to 30 segments.
- Perform currency revaluation at user-defined intervals.*
- Use virtually unlimited transaction types—actual, budget, and statistical.
- Option to allow entry of out-of-balance batches.
- Option to post from Edit List.
- Provide powerful synergy with the Premier modules.

*Requires Multi-Currency Manager module for operation.



Two Ledgers to Fit Your Unique Needs

To meet the diverse accounting needs of today's businesses, Sage PFW offers you a choice between two distinct ledgers: the Standard Ledger and the Premier Ledger. Each provides the essential tools and insights you need for financial analysis and integrates seamlessly with all other Sage PFW modules. With its optional Translations, Inter-Company, and Consolidations modules, Premier Ledger provides more extensive functionality and flexibility for financial management.

Features

Premier Modules

Premier Inter-Company

Enter inter-company transactions to an unlimited number of related companies.

Predefine allocation of inter-company transactions.

Generate eliminations to simplify inter-company transactions.

Send transactions to recipient companies to post to desired accounts.

Easily tag inter-company expenses in Accounts Payable and Purchase Order modules.

Save inter-company transactions for easier auditing.

Clearly view the finances of all your companies at period close.

Premier Consolidations

Consolidate unlimited companies into a single parent.

Utilize multiple tiers of consolidation.

Consolidate all data or only specific accounts.

Accommodates different chart of accounts formats and varying fiscal periods.

Consolidate by percentage of ownership.

Recalculate earnings at the parent level.

Post in summary or detail.

Map consolidation information to any given general ledger account.

Perform consolidation and currency translations with a single step in multicurrency environments.

Premier Translations*

Comply with International Accounting Standard 21 and FASB 52 requirements.

Configure your Chart of Accounts to accommodate translation types and rates.

Consolidate multiple general ledgers in different currencies.

Define translation types.

Easily override predefined translation types.

Generate financial reports in unlimited alternate currencies.



The Premier Inter-Company module will generate entries in the target company, along with any necessary due-from/due-to transactions.

Customization

You can easily customize the General Ledger modules to better fit your business processes for maximum functionality and efficiency, ensuring consistent system use and reducing training requirements. Using unique customization templates, you can remove, rename, require, or prevent entry as well as set minimum and maximum numeric ranges for any entry field. Additionally, you can hide screen tabs that are not required in your business and even create your own field-level help. These are just a few of the possibilities that can set productivity soaring throughout your organization.

Multicurrency Capabilities

Take control of the global marketplace with robust multicurrency capabilities, including instant conversion of foreign currencies to home currency and vice versa, plus calculating gains and losses accrued through currency exchange. With Premier Consolidations, you can use different currencies for each company and, in turn, automatically convert those currencies to the parent company's reporting currency. The multi-currency features empower you to transcend many of the operational challenges of global enterprise.

Access Business Critical Information

Proactively maintain proper audit trails on your journal entries down to the line item level. In cases where the journal entry requires more information, you can attach supporting documents and then launch the documents for viewing and/or modifications directly from journal entry. This ensures that each journal entry can be validated even if the person making the entry is not readily available. Universal Notes and Attachments offers the insight required in your journal processing and much more. The possibilities are endless since this functionality is available throughout Sage PFW.

Streamlined Integration

As the heart of your accounting system, General Ledger seamlessly integrates with all other Sage PFW applications. Each submodule allows you to distribute transaction information in detail or summary and enables you to post information directly or indirectly to your ledger. The Premier General Ledger module provides you with additional control and flexibility through powerful add-on Premier modules.

- The Premier Intercompany add-on allows you to simplify your transactions between business entities and maximize the efficiency of your intercompany business.
- Premier Consolidations lets you quickly gather and consolidate financial data and provides you with a comprehensive, highly accurate, up-to-date, and meaningful view of every aspect of your organization.
- Premier Translations enables you to configure your Chart of Accounts to accommodate a variety of translation types including spot, historic, average, one-for-one, and any number of user-supplied translation rates, sharpening your competitive edge in the global marketplace.

The smooth and accurate flow of data through General Ledger ensures that you have complete control over the financial pulse of your business.

Improve Your Decision Making

With General Ledger your financial information is accurate, complete, and easy to maintain. Powerful processing features include immediate data validation using visual red-flag alerts, toolbar options for frequently used actions, optional regeneration and recurring methods, and use of historical batches as templates for new entries. Additional key automation features incorporate import capabilities using Lotus or Microsoft Excel® files, automatic generation of additional departments or account numbers, and the ability to quickly restrict subsystem access for each account number. Every time you post a transaction, the system automatically updates all balances and history, which allows for more up-to-the-minute analysis and makes closing the period a snap.

These automatic features simplify your financial management, eliminating errors and facilitating smooth, cost-efficient operations, which keep both management and customers happy.

Insightful Reports and Drill-Down Capabilities

Accurate analysis of your operations enables you to make stronger business decisions, and Sage PFW provides the reports you need to back up those decisions. The software includes Microsoft FRx Desktop, a financial reporting leader. Customize your reports to a desired look and feel, report on posted and unposted data, and input multiple budgets for comparison to reports. Further explore your data using Financial Explorer to perform comprehensive inquiries and drill downs from anywhere in the system

“Sage PFW and its modules are very smooth and surprisingly easy to use. We now have a completely integrated system—exactly what we need for our diverse intercompany environment.”

Susan Blair
Director of Enterprise Finance
Citizen Potawatomi Nation